

**WATERPROOF.COM**



# **WATERPROOF.COM**

## **Product Catalog**

*Basement Waterproofing Systems*

**WATERPROOF.COM LLC**

626 Brakke Drive  
Hudson, WI 54016

**PHONE:**

(651) 644-2000

**WEBSITE:**

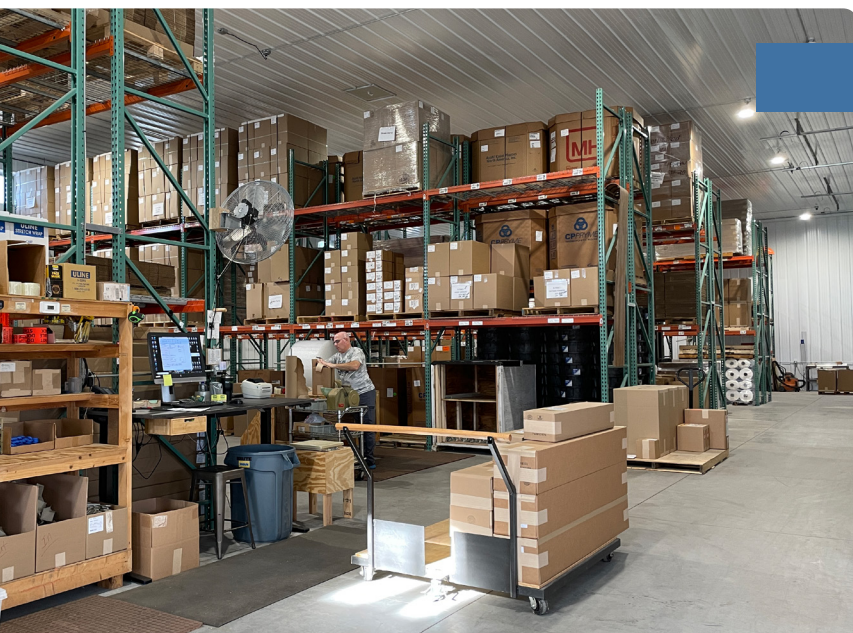
[www.waterproof.com](http://www.waterproof.com)

**EMAIL:**

[info@waterproof.com](mailto:info@waterproof.com)

# COMPANY HISTORY

We are a third generation family-owned and operated business dating back to 1965 when Robert "Bob" Cotten filed his first patent on the Beaver Basement Water Control System. After decades of hands-on waterproofing experience, Ken Cotten, designed a complete line of professional basement systems. Each engineered for high-flow, efficient performance and ease of installation. Today, we offer a full range of basement waterproofing solutions to remedy any wet basement or crawlspace at factory-direct prices.



## Made In Minnesota

All of our basement waterproofing products are proudly made in Minnesota. We manufacture using eco-friendly, recycled PVC that stands the test of time. We offer our systems factory-direct, saving you money and time. We're your one-stop-shop for all your professional waterproofing needs.

## Professional Manufacturer-Direct Products



**BASEMENT WATERPROOFING SYSTEMS:** We manufacture a full line of professional basement waterproofing systems including our hybrid drain tile Fast Track basement system, stand alone Drain Main footer systems and above floor Water X-Tract baseboard channel. These labor saving designs will increase your bottom line and save you time on the job - guaranteed!



**CRAWLSPACE BARRIERS:** Encapsulate crawlspaces with our rugged, bright white VaporBright Crawlspace Liner to seal out moisture and odors. Our most versatile drainage system called the Fast Track can be installed in basements as well as crawlspaces. It's unique self-filtering design can remedy any wet basement or crawlspace.



**SUMP PUMP SOLUTIONS:** We carry a full selection of professional, industry leading sump pump products from the industry's most trusted brands: Zoeller and Jackel. Zoeller sump pumps are made of cast iron and built to last. Jackel basins and lids offer superior protection and easy of installation.

# CONTENTS

- 04 Fast Track Basement System
- 04 Drain-Eze Basement System
- 04 Rim-Skirt Basement System
- 06 Drain Main Basement System
- 08 Water X-Tract Basement System
- 10 VaporBright Crawlspace
- 11 Sump Pumps
- 12 Basins & Lids
- 13 Check Valves & Drains
- 14 UnderGround Downspouts

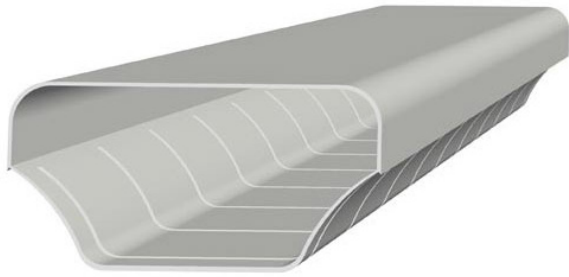
## Lifetime Membership

As a Lifetime Member of Waterproof.com you have access to our exclusive “*Member’s Only*” supplies at competitive pricing - *no franchise fees - no quotas - no territory restrictions!* We’re your one-stop shop for all your professional basement waterproofing needs. We offer fast and free shipping!

Enjoy our quick, priority shipping service on all orders to keep your business running smoothly. Our basement waterproofing systems are designed with efficiency, structural integrity and saleability in mind. Reduce your time on the job and close more leads with Waterproof.com’s line of basement waterproofing systems. Our systems are supported with professional sales and marketing materials.

FAST TRACK SYSTEM | DRAIN-EZE SYSTEM | DRAIN MAIN SYSTEM | WATER X-TRACT SYSTEM

# FAST TRACK BASEMENT SYSTEM



## Fast Track Basement System Main Sections (90ft)

Item# FT4449

- 6 ft long main sections
- 3-1/2 in width
- 2 in height

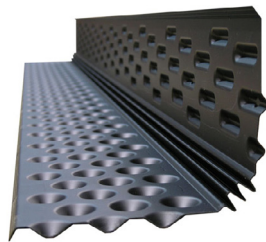
*Our top-of-the-line basement waterproofing system designed to save you money and time on the job!*

- Uses fine slits to screen dirt and sand from entering the system
- Can be installed on top or next to the footer using Drain-Eze or Rim-Skirt (shown below)
- Concave sidewalls create an umbrella effect that prevents dirt compaction next to the slits for clog-free drainage
- Compared to pipe-and-gravel Fast Track requires: less digging, less hauling, less rock and less workman on the job!



## Drain-Eze Basement System Main Sections (180ft)

Item# DE4448



- 6 ft long main sections
- 5-1/2 in vertical up the wall
- 6-1/2 in horizontal across the footing
- 3/8 in space between the floor and wall

Drain-Eze uses patented expandable bi-fold technology to absorb the common wave deformity generic dimple mat can't overcome.

## Rim-Skirt Basement System Main Sections (180ft)

Item# RS4440



- 6 ft long main sections
- 4 in vertical
- 1-5/8 in width

When installing the Fast Track on top of the footing use the Rim-Skirt to create the back fin up the basement wall to collect wall seepage.

*Fast Track*





### Fast Track Universal Corners (8 units)

Item# FT5559

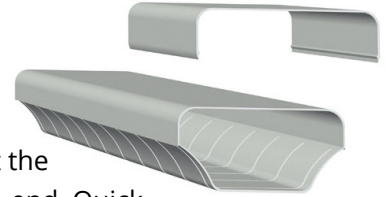
Universal  
90-degree corners.



### Fast Track Snap Joiners (36 units)

Item# FT2229

Snap joiners connect the main sections end-to-end. Quick snap connectors keep Fast Track main section channels straight and true.



### Fast Track Inspection Ports (4 units)

Item# FT6669

Installed for access to the system for service.



### Fast Track Tees (4 units)

Item# FT7779

Tees off to the sump pump or run a vein out through the middle of the floor.



### Fast Track Sump Drops (4 units)

Item# FT9999

Channels water from main sections to sump basin. Round opening fits 4" round PVC pipe.



### Fast Track & Drain-Eze Sell Sheets

Item# FTDE01

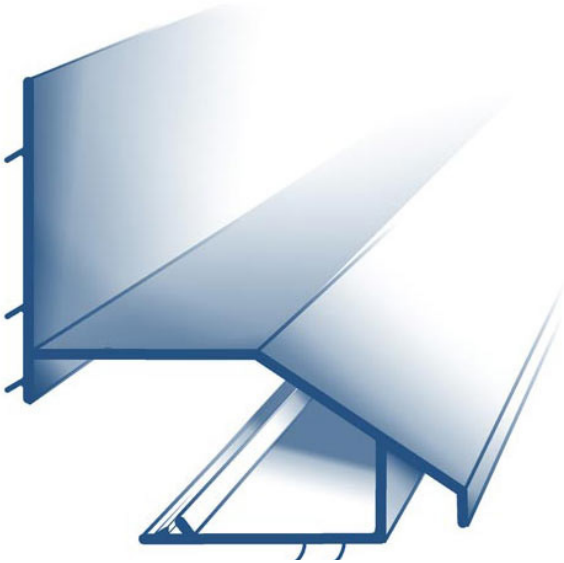
Professional 8.5" x 11" printed product sell sheets showcasing the Fast Track and Drain-Eze Systems.

# DRAIN MAIN BASEMENT SYSTEM

## Drain Main Basement System Main Sections (90ft)

Item# DM4447

- 6 ft long main sections
- 4-1/4 in overall vertical
- 3-1/2 in overall width
- Interior water channel cavity is 1-1/2 in tall by 3-1/2 in width



*Rugged, stand alone interior basement waterproofing footer system integrates the reliable baseboard style system with the tried-and-true subfloor drain tile system.*

- LESS than half the work of traditional drain tile
- NO mud digging or trenching around basement
- LESS than 6-inches of floor removed for installation
- Open back design collects water seepage for the full length of the foundation
- Two rubber seals on the bottom of the channel trap hydrostatic pressure
- Leak guard is the secondary channel that keeps water from building up under the seam between floor and new cement
- Wall flanges direct any seepage from the face of the walls behind and into the system



### Drain Main Inside Corners (4 units)

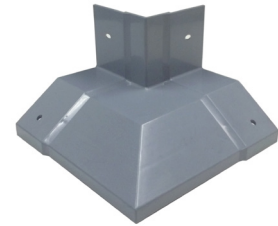
Item# DM5557



Pre-molded 90-degree inside corner for the Drain Main Basement System.

### Drain Main Outside Corners (4 units)

Item# DM8887



Pre-molded 90-degree outside corner for the Drain Main Basement System.

### Drain Main Sump Drop Kits (4 units)

Item# DM3337



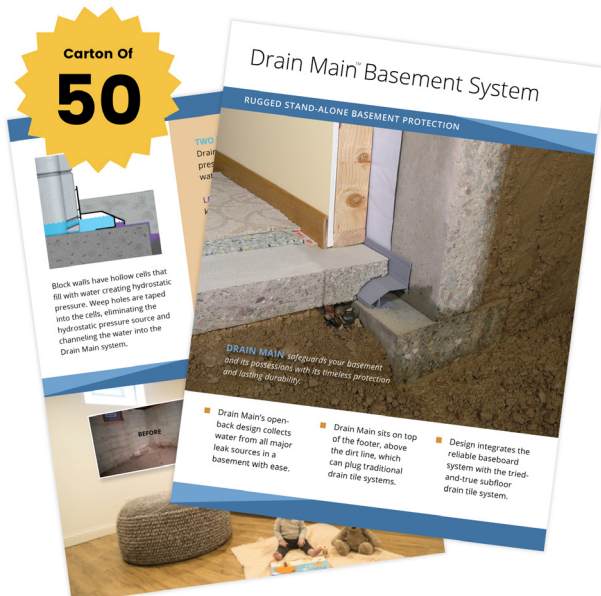
Sump pump kit connects the Drain Main main sections to the sump. Round opening fits 4-inch round PVC pipe.

### Drain Main Inspection Ports (4 units)

Item# DM6667



Drain Main inspection ports give you access to the channel once installed.



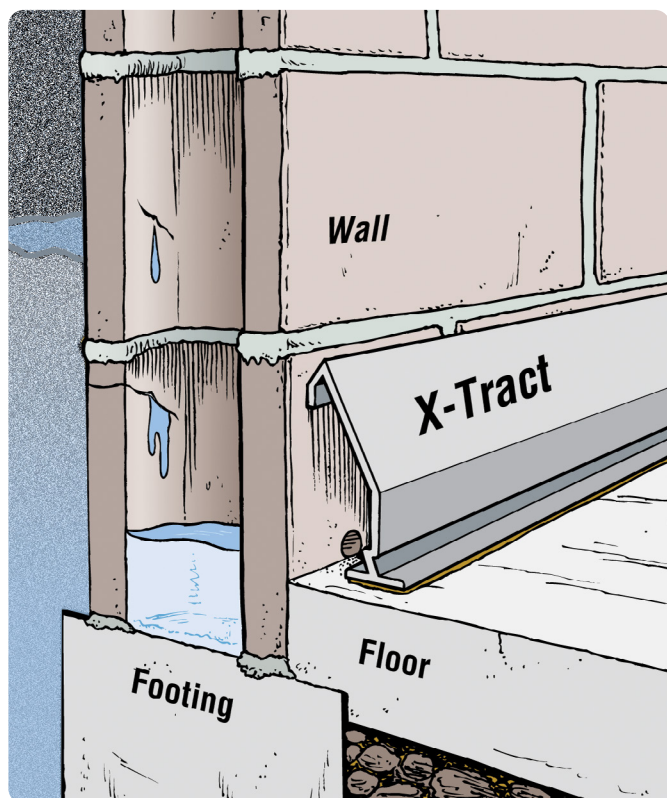
## Drain Main Sell Sheets

Item# DM0101

Professional printed 8.5" by 11" heavy glossy card stock product sell sheets showcasing the Drain Main Basement System.



# WATER X-TRACT BASEMENT SYSTEM

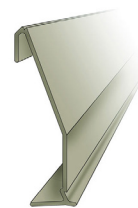


## Water X-Tract Basement System Main Sections (130ft)

Item# XT4444

Hollow baseboard channel is adhered watertight to the concrete floor using the Pro-SealOnce Adhesive. No jackhammers or trenching!

- 6 ft 6 in main sections
- 4-1/4 in overall vertical



## Pro-SealOnce Adhesive (12 tubes)

Item# XT3334

Pro-SealOnce is a specially formulated, new generation waterproofing adhesive designed to bond the Water X-Tract System watertight to the cement floor, even in wet conditions! (2 cartons of Pro-SealOnce needed per carton of Water X-Tract Main Sections.



## Water X-Tract Inside Corners (30 units)

Item# XT5554

Pre-molded 90-degree inside corners for the Water X-Tract System.



## Water X-Tract Outside Corners (30 units)

Item# XT8884

Pre-molded 90-degree outside corners for the Water X-Tract System.



## Water X-Tract Butt-Joint Connectors (200 units)

Item# XT2224

Butt-joints connect main sections end-to-end with an overlapping, water-tight joint.



## Water X-Tract End Caps (30 units)

Item# XT1114

End caps are used to dead end the Water X-Tract main sections.



## Water X-Tract Drain Ports (10 units)

Item# XT0004

23-inch long drain ports used to connect system to sump pump or floor drain.



## Water X-Tract Sell Sheets

Item# XT01010

Professional 8.5" x 11" printed product sell sheets showcasing the Water X-Tract Systems.







### Perfect SealOnce Tool Kit (15 units)

Item# XT6666



Makes a perfect, water-tight seal between the floor and Water X-Tract Basement System easy. Includes 10 bullnose tools and 5 square nose tools.

### Sausage Gun Tips (6 units)

Item# SG1115



Reusable sausage gun tips made of polypropylene used to deliver a bead of Pro-SealOnce Adhesive using the 20oz Manual Sausage Gun.

### 20oz Manual Sausage Gun (1 unit)

Item# SG2225



Made of lightweight aluminum used to apply the Pro-SealOnce Adhesive when installing the Water X-Tract Basement System.

### Electric Scarifier (1 unit)

Item# SF5555



Electric scarifier removes any paint, leftover tile adhesive or stubborn debris on the concrete basement floor in seconds. Makes the prep work for Water X-Tract System a breeze!

- The powerful and durable Model M5 Scarifier weighs 21 lbs
- The cutters beat the surface at over 96,000 times/minute
- It has a cleaning area of 8" wide
- (115V / 230V) Removal rate of 70-100 sq ft per hour
- Scarifier heads SF4445 sold separately

### Scarifier Heads (1 unit)

Item# SF4445



The scarifier heads can be used as a concrete grinder, scarifier, paint chipper, needle scaler, and paint remover.

- The scarifier heads beat the surface at over 96,000 times/minute
- They are of the highest quality and are extremely durable and long-lasting
- Electric SF5555 scarifier sold separately

# VAPORBRIGHT CRAWLSPACE



## VaporBright Premium Crawlspace Barrier (12' x 100' roll)



### 12-MIL VaporBright Liner

Item# VB12

### 20-MIL VaporBright Liner

Item# VB20

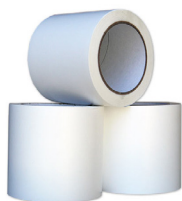
VaporBright crawlspace vapor barrier used in applications that demand exceptional impact or puncture resistance, in addition to waterproof barrier. It is specifically engineered to provide high strength and durability in a lightweight material.

- Available in 2 mil thicknesses: 12-MIL and 20-MIL
- White-on-white reinforced nylon weave crawlspace liner
- 12-foot by 100-foot roll

### VaporBright Tape (4" x 100' roll)

Item# VB2222

Used to seam the VaporBright Crawlspace liner. White in color.



### VaporBright Butyl Tape

Item# VB3332

Used to fuse liner together. White in color. Available in 1-1/2" x 90' rolls.



### VaporBright Fasteners (500 units)

Item# VB6662



- 3/4" button head
- 1/2" shaft

White nylon fasteners anchor VaporBright Crawlspace liner for easy installation.

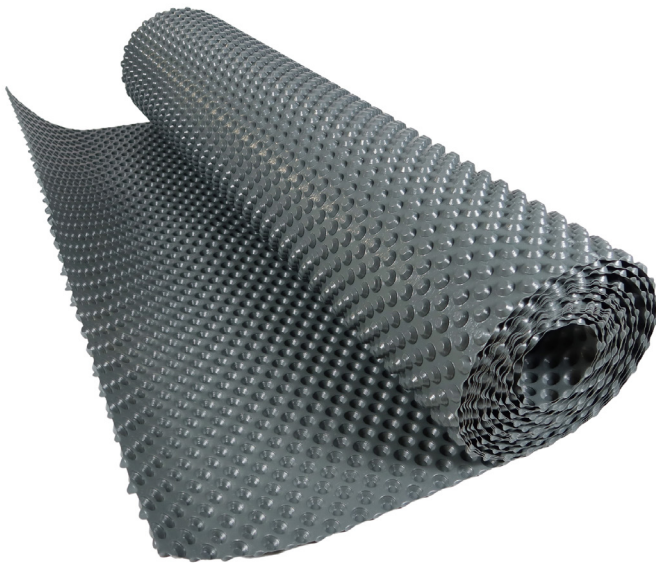
### VaporBright Sell Sheets

Item# VB0101

VaporBright Crawlspace sell sheets. 50 sheets of 8.5" x 11" heavy glossy cardstock.



## BASESHIELD DRAINAGE



### BaseShield Drainage Dimple Mat (4ft x 50ft roll)

Item# BS-4X50

BaseShield is a dimpled waterproofing membrane that can be used in interior or exterior applications. BaseShield is installed onto the floor of the crawlspace to create a waterproof membrane. Then, layer over the VaporBright Crawlspace liner to encapsulate the space and create a clean, bright finish.

- 4-foot by 50-foot roll
- 200 sq ft per roll
- Gray color

## SUMP PUMP SUPPLIES

### PRIMARY SUMP PUMPS

#### Zoeller M53 1/3HP Sump Pump (1 unit)

Item# SPZ053

Durable 1/3HP cast iron switch case, motor and pump housing.

- 1-1/2" NPT discharge and passes 1/2" spherical solids
- 3 year manufacturer's warranty
- Cast iron housing
- Submersible sump pump
- Vertical float switch
- Use with minimum sump basin size of 18 inches
- 120 Volt. 9.7 running amps



#### Zoeller M98 1/2HP Sump Pump (1 unit)

Item# SPZ098

Durable 1/2HP cast iron switch case, motor and pump housing.

- 1-1/2" NPT discharge and passes 1/2" spherical solids
- 3 year manufacturer's warranty
- Cast iron housing
- Submersible sump pump
- Vertical float switch
- Use with minimum sump basin size of 18 inches
- 120 Volt. 9.4 running amps





# SUMP PUMP SUPPLIES

## BASINS & LIDS

### Jackel 18" x 24" Pre-drilled Basin (2 units)

Item# SPB-SF22



Durable, structural foam basins are made of rugged polyethylene. Premium residential sump basin. Constructed from ultra strong, heavy duty structural foam, the Jackel-SF22 will provide decades of unfaltering service. The Jackel-SF22A has our strongest and thickest rim, the 360 degree EZ Grab™ handle. It also incorporates our heavy duty, non-corrosive nylon encapsulated inserts allowing the Jackel-SF22 to be gas/radon tight and prohibits odor escape.

- The 18" x 24" basin
- 22.5 gallon capacity
- Material: Injection Polyethylene Structural Foam
- Gas and Radon tight and odor free
- 48 factory drilled, 5/16" holes

### Jackel Gas-tight Lid (2 units)

Item# SPG001



The structural foam gas-tight cover is 5/8" in thickness with a diameter of 20 1/2". The reinforced ribs enhance the structural integrity of the gas-tight cover sump pump lid.

- For use with our 18" diameter basins
- 4-Bolt, Gas and odor tight
- Includes: (1) 4" Inlet Hub, (2) 2" Flanges, (1) 3" Flange, (1) 1-1/2" Flange, (1) Cord Grommet, (4) Bolts and Washers, (1) Roll of Sealing Tape
- Diameter: 20-1/2"
- Bolt Circle: 19-1/2"
- Injection Molded Polyethylene Structural Foam
- Sump or Sewage Pumps

### Jackel Split Cover Lid (2 units)

Item# SPC003



The corrosion proof cover is constructed from injection molded polyethylene structural foam and provides superior structural toughness and reliability. The oval shaped hole is for the discharge pipe from the submersible sump pump and the circle shaped hole can be used for the pump's power cord.

- Two piece design provides for maximum flexibility
- Works with all submersible sump pumps
- Diameter: 20-1/2"
- Bolt Circle: 19-1/2"
- Structural Thickness: 5/8"
- Injection Molded Polyethylene Structural Foam

### Jackel Solid Blank Lid (2 units)

Item# SPF001



The Jackel-SF22B Sump Basin Cover is ideal for use with a submersible sump pump where a gas tight seal is not a concern. The solid design allows for discharge and vent holes to be drilled in the field allowing for maximum flexibility. The corrosion proof single piece cover is injection molded polyethylene structural foam and provides superior toughness and reliability.

- Diameter: 20-1/2"
- Bolt Circle: 19-1/2"
- Structural Thickness: 5/8"
- Injection Molded Polyethylene Structural Foam

## CHECK VALVES & DRAINS

### Jackel 1-1/2" Check Valve (6 units)

Item# SPV-JACKEL



Our Jackel check valve threads directly into the discharge of a 1-1/2" sump pump. It comes with Jackel's own adapter which fits 1-1/2" black, galvanized, or DWV schedule 40 pipe.

- Threads for 1-1/2" discharge pump
- Industry's most durable flapper
- Stainless steel clamps
- Strong, durable ABS body
- Flow arrow molded onto valve
- Fits 1-1/2" black, galvanized and DWV Schedule 40 pipe
- Maximum operating pressure is 45 PSI

### Dranjer Sump Cover Drain with Ball Float (6 units)

Item# SPJS-5



Dranjer Model SPJ-S5 sump cover drain is designed to be used as part of the cover for a basement sump pump. Drainer sump drain seals out radon, soil gases, insects and mold spores.

- The Dranjer sump cover drain has a plastic ball valve
- The cover plate is 5" in diameter
- The drain hole is 1-1/3" in diameter
- The below grade depth is 4-1/2" and the below grade width is 4-2/5"
- Attach sump drain to the underside of the cover with 3/16" bolts (included)

## COMBO PUMPS & BATTERY BACKUP PUMPS

### Zoeller Aquanot M53/508 Backup Pump System (1 unit)

Item# SPW025



Zoeller Job-Ready ProPak Aquanot includes M53 1/3HP primary pump, 508 backup, integrated check valve, float switch and piping.

- 3 year manufacturer's warranty
- Cast iron housing
- Submersible sump pump
- Vertical float switch
- 12 Volt DC/120 Volt AC voltage
- Pumps 2340 gallons-per-hour @ 5' lift (or 1800 GPH @ 10')
- Battery sold separately

### Zoeller 507 Battery Backup Pump (1 unit)

Item# SPZ507



Automatically starts when existing sump pump fails. Features include 10 amp battery charger without burnout and battery overcharge protection.

- 1 year manufacturer's warranty
- 12 Volt DC Voltage
- Automatic light and alarm indicators
- Thermoplastic housing material
- Vertical float
- 1-1/2" discharge port size
- Built-in check valve
- Pumps 1380 gallons-per-hour @ 5' lift (or 900 GPH @ 10')
- Primary pump and battery sold separately

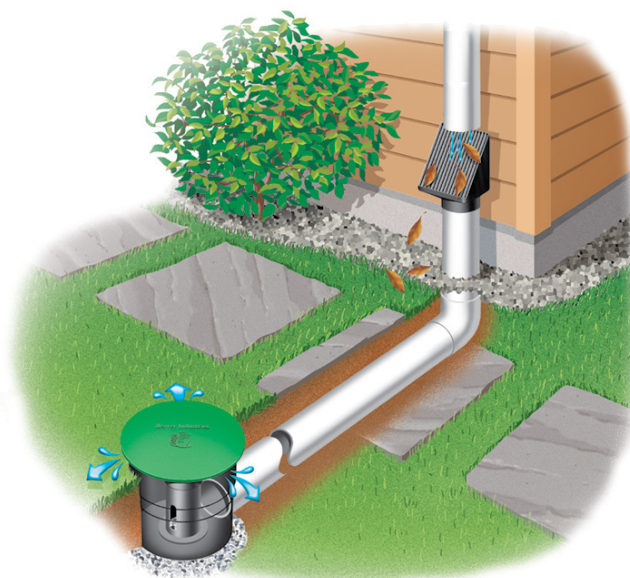
# UNDERGROUND DOWNSPOUTS

## UnderGround Downspout Kits (12 units)

Item# MBK093-12

UnderGround Downspouts divert roof water run-off. Easy to install underground using a 4-inch thin wall round PVC pipe and 90-degree elbow (not included in the kit).

- Each kit includes: lid, center post, pot and debris filter.



## Debris Filter / Ice Guard (48 units)

Item# DSF040-48

Debris filter ejects leaves and twigs as water free falls into the debris filter grate and flows underground through the 8 feet of PVC pipe to the Bubbler Pot. Debris filter acts as an ice guard in cold, snowy climates. Compatible with any 4-inch round PVC pipe.



## Bubbler Pot Assembly (18 units)

Item# BUB111-18

The underground catch basin collects roof water runoff through a 4-inch round PVC pipe.

- Each bubbler pot assembly includes: lid, center post and pot.



## UnderGround Downspout Sell Sheets

Item# UG0101

UnderGround Downspout sell sheets. 50 sheets of 8.5" x 11" heavy glossy cardstock.





**WATERPROOF.COM LLC**

626 Brakke Drive  
Hudson, WI 54016

**PHONE**

(651) 644-2000

**WEBSITE:**

[www.waterproof.com](http://www.waterproof.com)

**EMAIL:**

[info@waterproof.com](mailto:info@waterproof.com)

**Confidentiality Notice**

This communication contains information which is confidential and may also be privileged. It is for the exclusive use of the intended recipient(s).

Prices are subject to change without notice.

© 2022 Waterproof.com LLC. All rights reserved.



**WATERPROOF.COM LLC**  
(651) 644-2000 | [waterproof.com](http://waterproof.com)